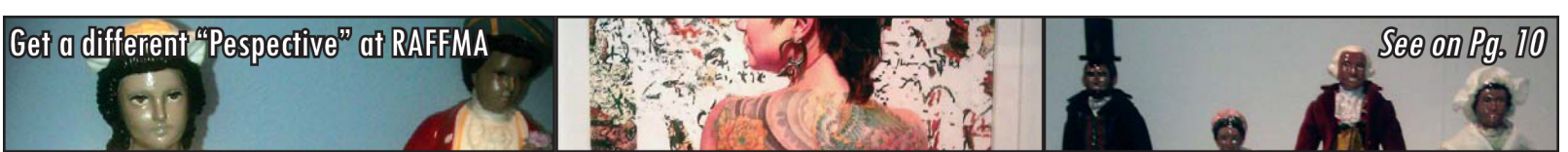




Get a different "Perspective" at RAFFMA



See on Pg. 10

# Coyote Chronicle

Vol. XLVI, No. 3

THE INDEPENDENT STUDENT VOICE OF CALIFORNIA STATE UNIVERSITY, SAN BERNARDINO FOR 45 YEARS

Monday, October, 15 2012

Chronicle Page 10

## Arts & Entertainment

Monday, October, 15 2012

# Art exhibit explores rich Latino culture

By **LUPE DURAN**

Staff Writer

A new exhibition at CSUSB's Robert and Frances Fullerton Museum of Art (RAFFMA) features contemporary art pieces that even those with little or no art background can certainly enjoy.

"Perspectives," on display until Dec. 15, is an exhibition rich in Chicano and Latino influences that features five artists from different backgrounds and artistic styles whose stories come alive through their artwork.

Inspired by promotional material found on her desk from Southern California artist Linda Vallejo, RAFFMA Museum Director and exhibition curator Eva Kirsch set out to organize the exhibition last Spring.

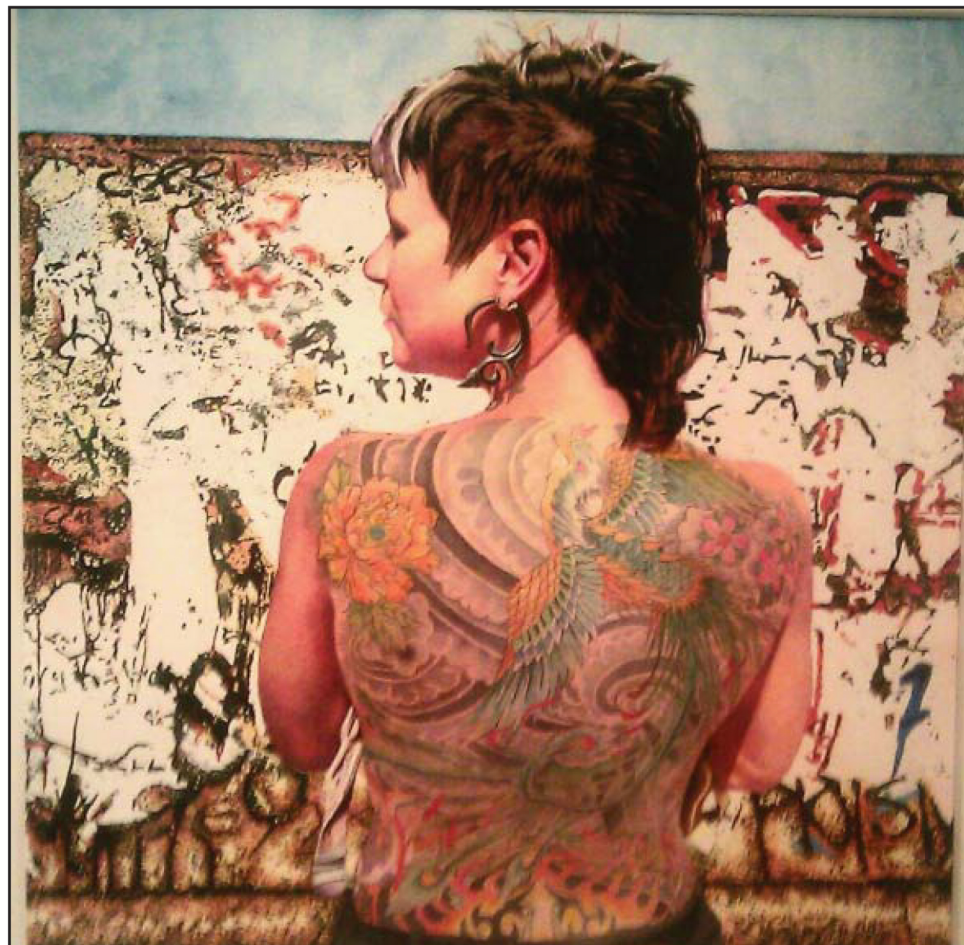
"Creative variety, artistic background, age group and location were determining factors," said Kirsch when asked about the process of putting "Perspectives" together.

Featured artists include Vallejo, Luis G. Hernandez, David Rosales, Kathy Sosa and Gregg Stone, whose work portrays their view on social and political issues as well as insight into their personal stories.

Gregg Stone, who before painting, dealt with a substance abuse issue in Tijuana, Mexico, reflects his life struggle in his work and depicts a blend of life on both sides of the border.

Rosales represents common racial stereotypes and misconceptions in his art by including giant robots, flying saucer sombreros and aliens in his pieces.

A little different from the others, Her-



Lupe Duran | Chronicle Photo

Artist Gregg Stone displays his perspectives on Spanish-American Culture at "Perspectives," an art gallery at RAFFMA.

nandez uses text in his work that also represents his life growing up in various cities around Baja, California and Southern California.

One thing these artists share is the desire to provide their viewers with a sense of familiarity through their art pieces. They

strive to give their audience an intimate and personal experience when observing their pieces.

Kirsch takes pride in the ways people can connect with her art.

"There was an older lady that came to the opening of 'Perspectives' who said

a woman in a painting she was admiring looked familiar and reminded her of her grandmother," she said.

According to Kirsch, this sort of exhibition is meant to reach out to the broader audience and show that art isn't necessarily complicated or difficult to understand and that things people deal with on a daily basis are depicted within it.

"Art enriches life," said Kirsch. "And once you get hooked, you will never quit."

Since the exhibition's opening day on Sept. 29, "Perspectives" has attracted a good number of art-goers. "We aren't expecting 'crowds' but the number of those coming in is good," Kirsch said.

Kirsch urged museum patrons to keep an open mind towards the art exhibited. "If you haven't been hooked yet, 'Perspectives' is your chance. It is playful -- multi-layered, accessible and provocative at the same time. Visit it and like it or hate it. Bring your own perspective!" added Kirsch.

The museum is open from 10 a.m. - 5 p.m. on Mondays through Wednesdays and Saturdays, 11 a.m. - 7 p.m. on Thursdays and is closed on Fridays and Sundays. Admission is free and parking is \$5 for the day, though hourly parking is also available.

Pre-scheduled tours are available for groups of 10 or more.

Additional information on that as well as other exhibitions and upcoming events can be found on the CSUSB RAFFMA museum's page at <http://raffma.csusb.edu>, as well as on the department's Facebook page.