

DIRECTIONS:

TAKE LONG BEACH FREEWAY #7 SOUTH ALL THE WAY TO LONG BEACH DOWNTOWN
EXIT BROADWAY GOING EAST (oneway) TURN RIGHT ON PINE AVE.
GO TO OCEAN. Jergins Trust Building CORNER OF OCEAN AND PINE
TEN STORY WHITE MOSAIC WITH GARGOILES. SUITE 818, EIGHTH FLOOR

Jergins Trust
120 East Ocean

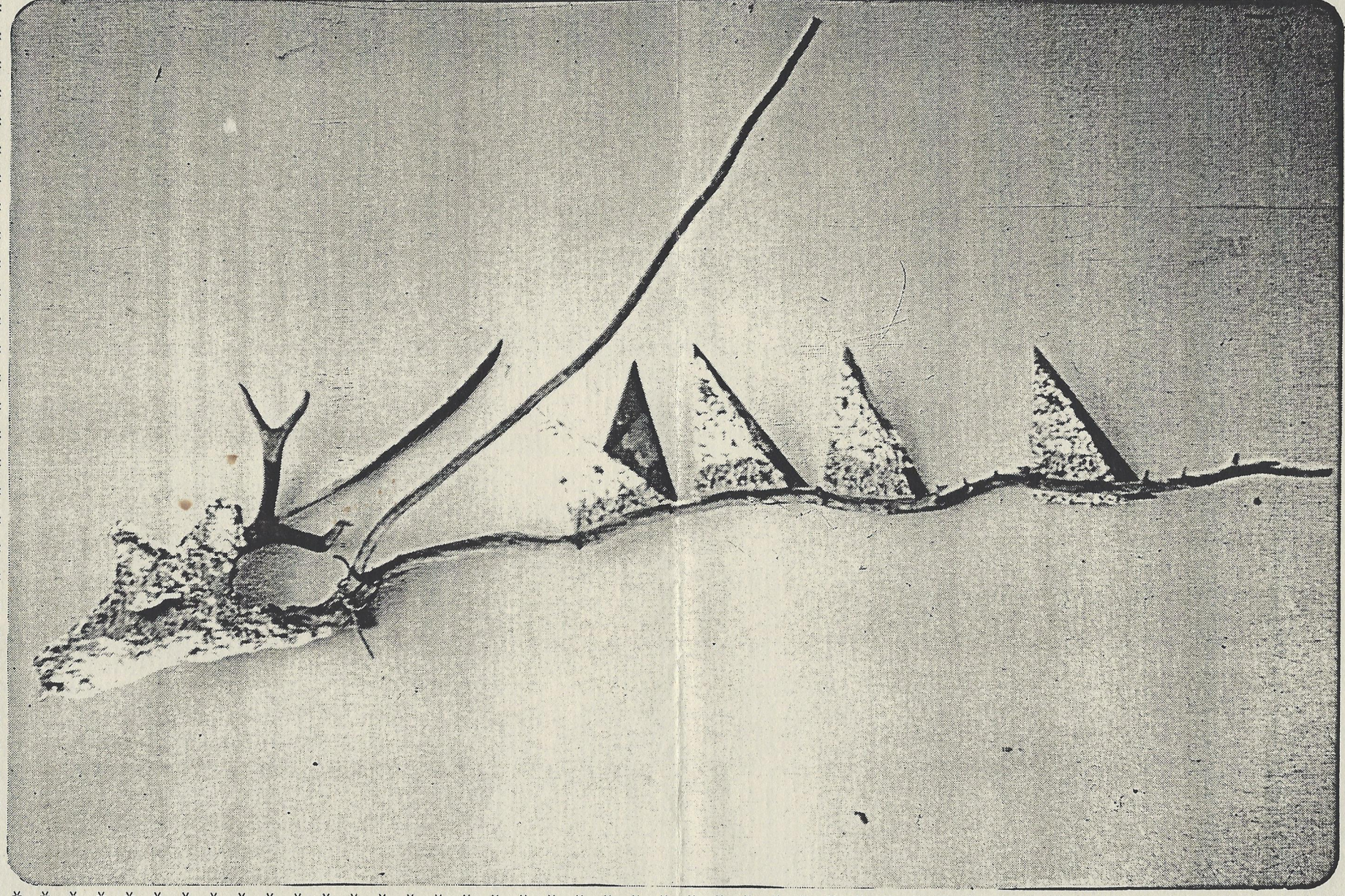
Help me make
it back to
LOS

mixed media paper

1985

48"x26"

RUNNING DEER



SATURDAY MARCH 23, 1985 NOON UNTIL DUSK

Come help me celebrate my new suite of work and say good-bye to my Long Beach studio and friends. We'll toast together with margaritas and sol.

My studio is right on the ocean. The sunsets are beautiful. This building is going to be knocked down in June 1985. It was the original court house building of Long Beach. A couple of my studio friends will also be opening their spaces for the most beautiful view you'll ever see. I have completed about 30 new works to share with you, my compadres and fellow artists.