

LINDA VALLEJO

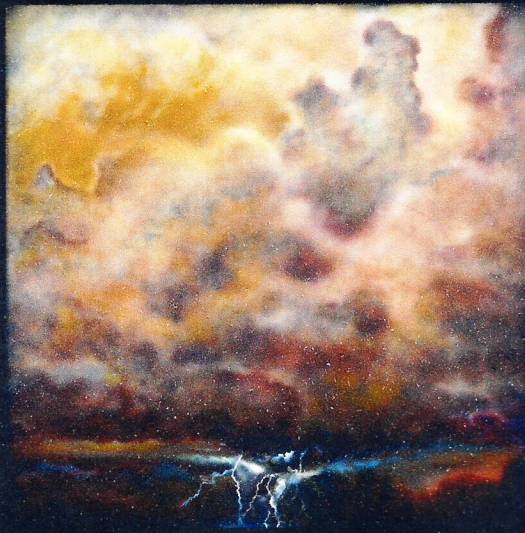
LIFE CHOICES: Turning Points



LINDA VALLEJO Environmental Art

"I am struck by Linda's dramatic capture of our beautiful environment here in California. Sadly, many of our states' beautiful features, forests, deserts and mountains are being changed by pollution, overuse, and other ecological issues. These are California's Life Choices."

*- Don Noyes-More, Editor in Chief ****



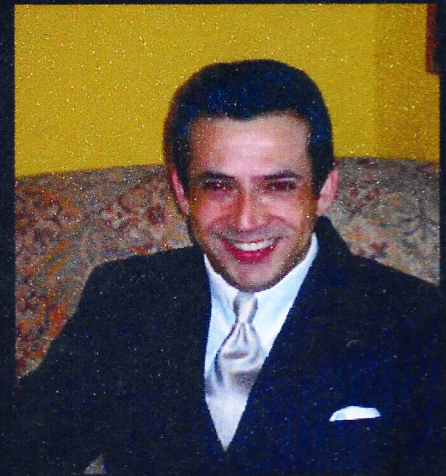
Linda Vallejo, born in Los Angeles in 1951. Her mother was born in Concord, California, and her father, Adam Vallejo, born in San Angelo, Texas, and graduated from UCLA in 1951. Adam Vallejo then entered the United States Air Force as a commissioned officer and the family moved to Germany. Ms. Vallejo has a brother, Tomas and a sister, Roseann. On returning to the United States the family lived in several states. Linda attended elementary school in East Los Angeles and Sacramento,

middle and high school in Montgomery, Alabama, in the early 1960's, and completed high school in Madrid, Spain, in 1969. Linda received a Bachelor of Fine Arts from Whittier College in 1973, completed undergraduate studies in lithography from the University of Madrid, Spain, and received a Master of Fine Arts from Cal State University, Long Beach, in 1978. Ms. Vallejo lives in Topanga Canyon, California, with her husband of twenty-nine years, Ron Dillaway. Her son, Robert, attends Georgetown Law School in Washington, D.C., and her son Paul is a junior at UC Santa Cruz.

[Additional Views & Information here](#)



Wednesday July 18, 2007
CHRISTIAN MARTINEZ, Publisher



"WELCOME TO DOWNTOWN LA LIFE MAGAZINE"

WINNER OF 8 LOS ANGELES AWARDS!

DOWNTOWN LA LIFE MAGAZINE, is the most widely read magazine for Downtown Los Angeles and surrounding neighborhoods. We are the preview "Tasting Menu" presenting Downtown Culture, Art, Business, Living Environments, Neighborhood Topics, and many interesting perspectives. We are often honored by being copied by others, but we are never duplicated!

WENDY ARIMAH