

Los Angeles County Museum of Art

CVC

THE GRAPHIC ARTS COUNCIL

GAC

Newsletter

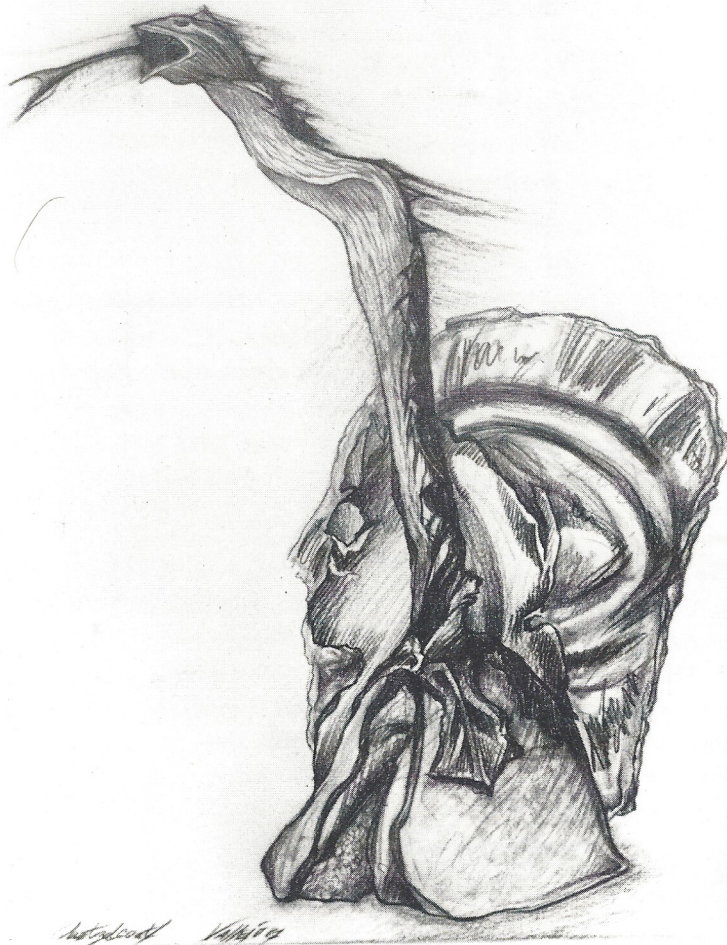


Jeff Koons
"Fisherman/Golfer"
Luxury and Degradation, 1986
Portfolio of 3 photolithographs
32" x 24"
Edition of 60
Photo Credit:
© Sarah Wells, 1989

Exhibitions of American Prints and Hispanic Art on Paper

by Bruce Davis.

On view until August 6 in the Prints and Drawings Galleries are two exhibitions: *From Whistler to Pollock: American Prints 1850-1950 from the Collection*, featuring about 90 of the finest American prints from the Museum's collection; and *Hispanic Art on Paper*, a show of about 35 prints and drawings by Los Angeles Hispanic artists. *From Whistler to Pollock* is the first, in what projects to be, a long and comprehensive series of exhibitions designed to reintroduce the museum-going public to LACMA's largely unfamiliar collection of prints and drawings. In recent years selections have been featured in shows, such as the 1984 exhibition in honor of Ebria Feinblatt's 38 years as curator of the collection, and the 1986 show celebrating the 20th anniversary of the Graphic Arts Council. But limitations of space and concept in those shows restricted the number of works exhibited. *From Whistler to Pollock* will



reveal more conclusively some of the collection's strengths, such as prints by James Abbott McNeill Whistler, Childe Hassam, John Sloan, George Bellows, and Paul Landacre.

Hispanic Art on Paper, has been organized by the Department of Prints and Drawings, as a complementary follow-up to the major exhibition, *Hispanic Art in the United States: Thirty Contemporary Painters and Sculptors*, on view at the Museum

earlier this year. The focus of the exhibition, of graphic art on Los Angeles artists, is appropriate because of the large number of talented Hispanic artists in the city on which Hispanic culture has had a tremendous impact. Perhaps the distinguishing, unifying characteristic of these works of art is what may be considered the directness of their appeal to the viewer's senses and emotions; the pervasive interest in figurative, representational, even ex-



pressionistic subjects; the frequent use of bright, unadulterated color; and the employment of direct art media, such as drawing and monoprint. Even when working in a collaborative printmaking medium, the predominant choice is screenprinting, which tends to be more immediate than lithography or etching, techniques that require the intervention of substantial “chemical” assistance.

The artists in the exhibition

are Carlos Almaraz, Alfredo de Batuc, Chaz Bojorquez, David Botello, Rudy Calderon, Barbara Carrasco, Yreina D. Cervantez, Roberto Delgado, Richard Duardo, Elsa Flores, Diane Gamboa, Margaret Garcia, Roberto Gil de Montes, Gronk, Dolores Guerrero-Cruz, Wayne Healy, Leo Limon, Gilbert Sanchez Lujan, Frank Romero, Eloy Torrez, John Valadez, Patssi Valdez, Linda Vallejo and George Yepes. ♦♦

Above:

M.71.51.2
Edward Hopper
Evening Wind
1921
Etching
7" x 8³/₈"
Gift of William Walker

Previous Page:

Linda Vallejo
Quetzalcoal
1987
Graphite on Paper
30" x 22"
Photo Credit: Greg Rodriguez